

DIN Connectors




Contents	1
introduction	1
Specifications	2
DIN Connectors(Plugs)	
Model Number System	3
Plugs	4
DIN Connectors(Sockets)	
In-Line Sockets	5
Vertical Type	
Metal Cover and Manual Soldering Type	6
Molded and Manual Soldering Type	7
Horizontal Type	
Dip Type	8 - 12
EMI-Proof Type	13 - 14

Introduction

HOSIDEN DIN connectors are supplied to electronic equipment manufacturers both in Japan and overseas and are very well accepted because of high quality , a variety of models available, and high reliability.

In order to satisfy customer requirements, we contrive to realize mass production of our products. And we provide, besides various plug and sockets (standard : 3 to 8P) , Plug and sockets for antenna and inline and insulating caps. Also, for meeting every possible applications and purposes, various products for printed circuit board and lead wiring, with switches and locking mechanisms and further with quick mounting mechanism on panel, those can be available.

	Plug	Socket
Insulation Resistance	100MΩ min. at 250V DC	100MΩ min. at 250V DC
Dielectric Strength	250V AC for 1 minute	250V AC for 1 minute
Current Capacity	1A 100V AC , 1A 12V DC	—
Contact Resistance	—	30mΩ max.

The shape of pin entrance () of DIN sockets may be different from that of actual product.

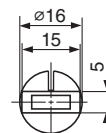
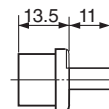
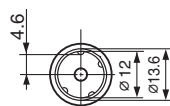
Uses	Audio-video equipment Precision machine Electronic music instrument and so forth.
------	--

Insulating Caps for DIN Connectors

Insulating Caps can be used for dust protection and protection of ICs from damage caused by static electricity from outside of electronic equipment.



TCP9426-01-010



Unit: mm

This is suitable for TCS4000 series and metal cover type sockets

For Example

TCP43□□-□□1□67
 P D K C

D1	Bush	
	Inside Dia (A)	Length (ℓ)
4	∅ 4.2	16
6	∅ 6.2	21
7	∅ 7.2	21
9	∅ 5.2	16

D	Bush	
	Inside Dia (A)	Length (ℓ)
4	∅ 4.2	16
5	∅ 5.2	16
6	∅ 6.2	21.5(21)
7	∅ 7.2	21.5(21)

(21) is applied to only TCP1300 Series.

K	Key Position	
75	Fig.1	Fig.2
76	Fig.3	Fig.4
85	Fig.5	
86	Fig.6	
87	Fig.7	
88	Fig.8	

C	Color
1	Black
2	Gray #1
3	Gray #2

C1	Color
2	Black
4	Gray #1
6	Gray #2

P	Pin Arrangement	Model No.			
		TCP0500	TCP0600	TCP1300	TCP4300
3	3	○	○	○	×
4	4	○	×	○	×
5	5a	○	○	○	○
2	5b	○	×	○	×
1	5c	○	×	×	×
6	6	○	○	○	○
7	7	○	○	○	×
8	8a	○	○	×	○
	8b	×	×	○	×
9	8a	×	×	○	×
	8b	○	×	×	×

○... Mass production ×... Consult to our sales person.

For Example

TCP0600-2□
 B

B	Cable Diameter
6	∅ 4
8	∅ 4.8
7	∅ 5.5
5	∅ 6
2	∅ 6.7
4	∅ 7

The shape of strain relief is different on each cable diameter.
 Please consult to our sales person.

Figure	Fig.1	Fig.2	Fig.3	Fig.4	Fig.5	Fig.6	Fig.7	Fig.8
TCP4300 Series								
Key groove Position								
DIN Standard No.	41524	—	41524	—	45327	45322	45329	45326
Number of Pins	3	4	5a	5b	5c	6	7	8a
Pin Arrangement								

TCP0500



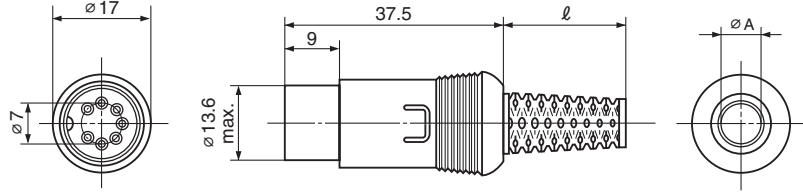
TCP0576-715267

Model No.

TCP05□□-715□67
P □ D₁ □ C₁

TCP155□□-715□67
□ D₁ □ C₁

* Pin Arrangement "5a" type only



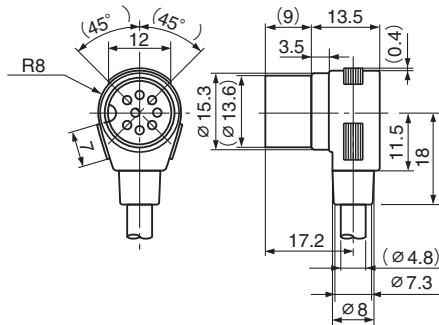
TCP0600



TCP0600-28

Model No.

TCP0600-2□
□ B



The socket is equipped with a cord.
(Plugs cannot be sold independently.)

TCP1300

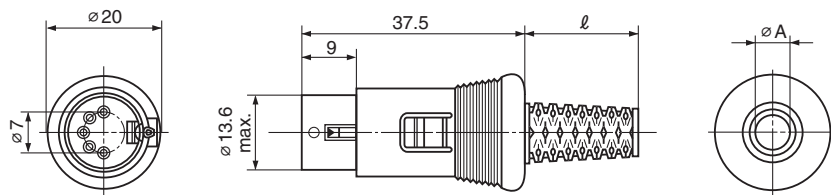
Quick Locking Type



TCP1356-715167

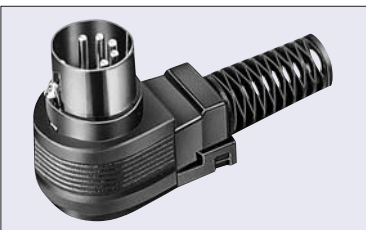
Model No.

TCP13□□-715□67
P □ D □ C



TCP4300

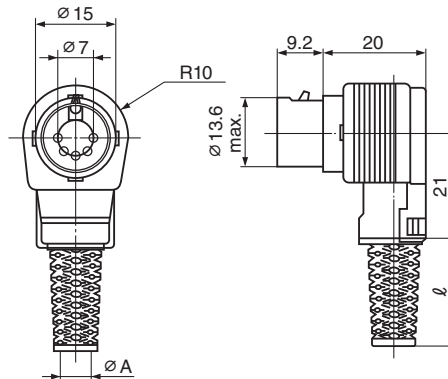
Quick Locking Type



TCP4355-761167

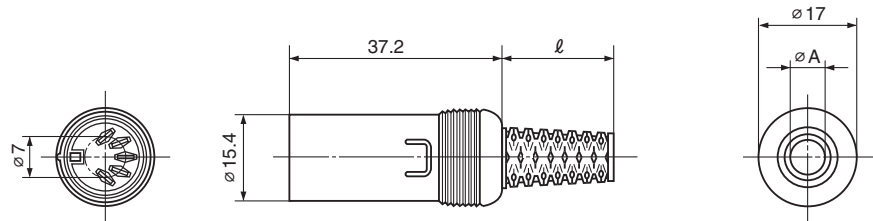
Model No.

TCP43□□-□□1□67
P □ D □ K □ C



TCS8000

Soldering Connection Type

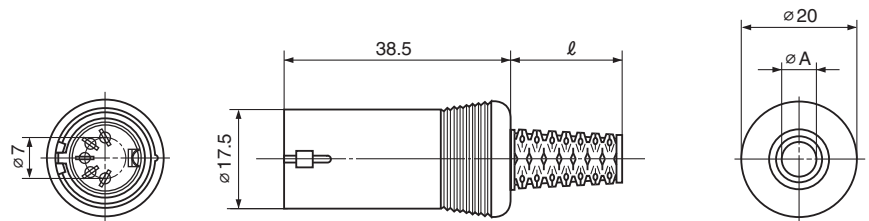
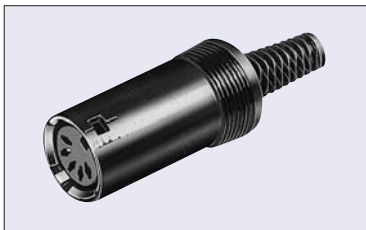


TCS8056-015277

DIN Standard No.	41524	—	41524	—	45327	45322	45329	45326	—			
Number of Pins	3	4	5a	5b	5c	6	7	8a	8b			
Contact Arrangement												
	Bush											
Length (ℓ)	Inner Dia. (A)	Color										
Model No.	16	4.2	Black	TCS8034-015277	TCS8044-015277	TCS8054-015277	TCS8024-015277	—	TCS8064-015277	TCS8074-015277	TCS8084-015277	TCS8094-015277
			Gray#1	TCS8034-015677	TCS8044-015677	TCS8054-015677	TCS8024-015677	—	TCS8064-015677	TCS8074-015677	TCS8084-015677	TCS8094-015677
			Gray#2	TCS8034-015477	TCS8044-015477	TCS8054-015477	TCS8024-015477	—	TCS8064-015477	TCS8074-015477	TCS8084-015477	TCS8094-015477
		5.2	Black	TCS8039-015277	TCS8049-015277	TCS8059-015277	TCS8029-015277	—	TCS8069-015277	TCS8079-015277	TCS8089-015277	TCS8099-015277
			Gray#1	TCS8039-015677	TCS8049-015677	TCS8059-015677	TCS8029-015677	—	TCS8069-015677	TCS8079-015677	TCS8089-015677	TCS8099-015677
			Gray#2	TCS8039-015477	TCS8049-015477	TCS8059-015477	TCS8029-015477	—	TCS8069-015477	TCS8079-015477	TCS8089-015477	TCS8099-015477
		6.2	Black	TCS8036-015277	TCS8046-015277	TCS8056-015277	TCS8026-015277	—	TCS8066-015277	TCS8076-015277	TCS8086-015277	TCS8096-015277
			Gray#1	TCS8036-015677	TCS8046-015677	TCS8056-015677	TCS8026-015677	—	TCS8066-015677	TCS8076-015677	TCS8086-015677	TCS8096-015677
			Gray#2	TCS8036-015477	TCS8046-015477	TCS8056-015477	TCS8026-015477	—	TCS8066-015477	TCS8076-015477	TCS8086-015477	TCS8096-015477
		7.2	Black	TCS8037-015277	TCS8047-015277	TCS8057-015277	TCS8027-015277	—	TCS8067-015277	TCS8077-015277	TCS8087-015277	TCS8097-015277
			Gray#1	TCS8037-015677	TCS8047-015677	TCS8057-015677	TCS8027-015677	—	TCS8067-015677	TCS8077-015677	TCS8087-015677	TCS8097-015677
			Gray#2	TCS8037-015477	TCS8047-015477	TCS8057-015477	TCS8027-015477	—	TCS8067-015477	TCS8077-015477	TCS8087-015477	TCS8097-015477

TCS8500

Quick Locking Type Soldering Connection Type



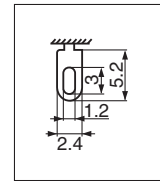
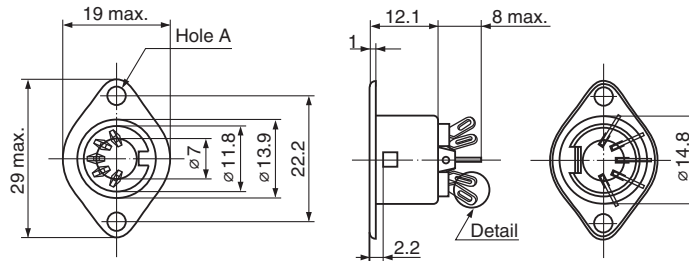
TCS8556-0170277

DIN Standard No.	41524	—	41524	—	45327	45322	45329	45326	—			
Number of Pins	3	4	5a	5b	5c	6	7	8a	8b			
Contact Arrangement												
	Bush											
Length (ℓ)	Inner Dia. (A)	Color										
Model No.	16	4.2	Black	—	—	TCS8554-0170277	—	—	TCS8564-0170277	TCS8574-0170277	TCS8584-0170277	TCS8594-0170277
			Gray#1	—	—	TCS8554-0170677	—	—	TCS8564-0170677	TCS8574-0170677	TCS8584-0170677	TCS8594-0170677
			Gray#2	—	—	TCS8554-0170477	—	—	TCS8564-0170477	TCS8574-0170477	TCS8584-0170477	TCS8594-0170477
		5.2	Black	—	—	TCS8559-0170277	—	—	TCS8569-0170277	TCS8579-0170277	TCS8589-0170277	TCS8599-0170277
			Gray#1	—	—	TCS8559-0170677	—	—	TCS8569-0170677	TCS8579-0170677	TCS8589-0170677	TCS8599-0170677
			Gray#2	—	—	TCS8559-0170477	—	—	TCS8569-0170477	TCS8579-0170477	TCS8589-0170477	TCS8599-0170477
		6.2	Black	—	—	TCS8556-0170277	—	—	TCS8566-0170277	TCS8576-0170277	TCS8586-0170277	TCS8596-0170277
			Gray#1	—	—	TCS8556-0170677	—	—	TCS8566-0170677	TCS8576-0170677	TCS8586-0170677	TCS8596-0170677
			Gray#2	—	—	TCS8556-0170477	—	—	TCS8566-0170477	TCS8576-0170477	TCS8586-0170477	TCS8596-0170477
		7.2	Black	—	—	TCS8557-0170277	—	—	TCS8567-0170277	TCS8577-0170277	TCS8587-0170277	TCS8597-0170277
			Gray#1	—	—	TCS8557-0170677	—	—	TCS8567-0170677	TCS8577-0170677	TCS8587-0170677	TCS8597-0170677
			Gray#2	—	—	TCS8557-0170477	—	—	TCS8567-0170477	TCS8577-0170477	TCS8587-0170477	TCS8597-0170477

TCS2200



TCS2250-0120177



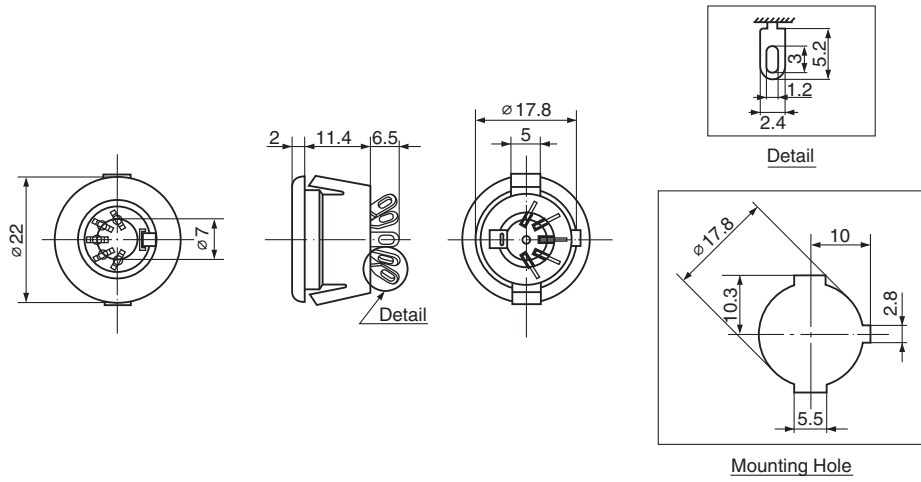
Detail

DIN Standard No.	41524	—	41524	—	45327	45322	45329	45326	—	
Number of Contacts	3	4	5a	5b	5c	6	7	8a	8b	
Arrangement										
Hole A	$\varnothing 3.2$	TCS2230-011177	TCS2240-0120177	TCS2250-0120177	TCS2220-010377	TCS2210-011177	TCS2260-0120177	TCS2270-0120177	TCS2280-0120177	TCS2290-0120177
	M3 × 0.5	TCS2231-0120277	TCS2241-0120277	TCS2251-0120277	TCS2221-0120277	TCS2211-0120277	TCS2261-0120277	TCS2271-0120277	TCS2281-0120277	TCS2291-0120277
	M2.6 × 0.45	TCS2231-0120177	TCS2241-0120177	TCS2251-0120177	TCS2221-0120177	TCS2211-0120177	TCS2261-0120177	TCS2271-0120177	TCS2281-0120177	TCS2291-0120177

TCS0830

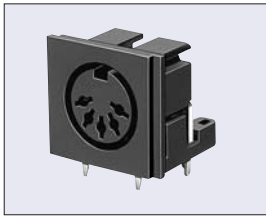


TCS0835-0120177

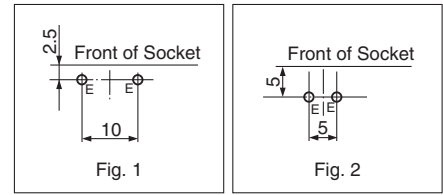
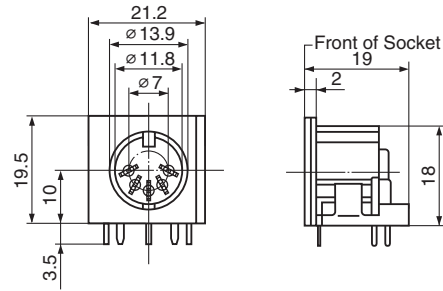


DIN Standard No.	41524	—	41524	—	45327	45322	45329	45326	—		
Number of Contact	3	4	5a	5b	5c	6	7	8a	8b		
Arrangement											
	Chassis Material Thickness										
Color			(Front View)								
Model No.	2.0	Black	—	TCS0834-0120177	TCS0835-0120177	—	—	TCS0836-0120177	TCS0837-0120177	TCS0838-0120177	TCS0839-0120177
		Gray#1	—	TCS0834-0120277	TCS0835-0120277	—	—	TCS0836-0120277	TCS0837-0120277	TCS0838-0120277	TCS0839-0120277
	1.0	Black	—	TCS0834-0120577	TCS0835-0120577	—	—	TCS0836-0120577	TCS0837-0120577	TCS0838-0120577	TCS0839-0120577
		Gray#1	—	TCS0834-0120677	TCS0835-0120677	—	—	TCS0836-0120677	TCS0837-0120677	TCS0838-0120677	TCS0839-0120677

TCS4400



TCS4450-0140577

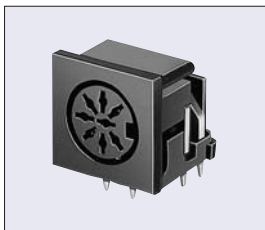


Ground Terminal Position

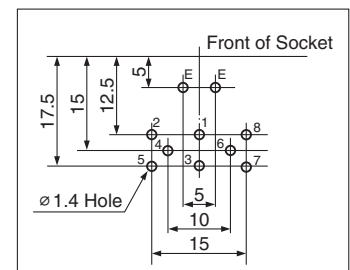
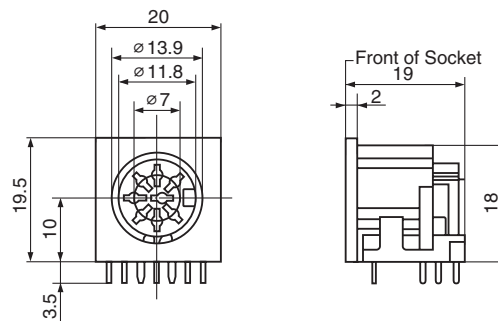
DIN Standard No.	41524	—	41524	—	45327	45322	45329	45326	—	
Number of Contacts	3	4	5a	5b	5c	6	7	8a	8b	
Arrangement										
Ground Terminal Position	Fig.1	TCS4430-0140577	TCS4440-0140577	TCS4450-0140577	TCS4420-0140577	TCS4410-0140577	TCS4460-0140577	TCS4470-0140577	TCS4480-0140577	TCS4490-0140577
	Fig.2	TCS4430-0141577	TCS4440-0141577	TCS4450-0141577	TCS4420-0141577	TCS4410-0141577	TCS4460-0141577	TCS4470-0141577	TCS4480-0141577	TCS4490-0141577

No. of Poles	3	4	5a	5b
Ground Term. Position Type Fig.1				
	Hole Layout (Bottom View)			
5c	6	7	8a	8b

TCS5089



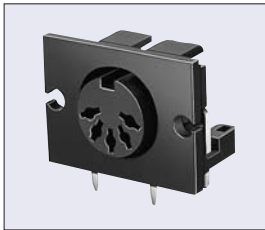
TCS5089-1841577



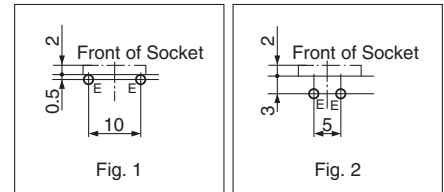
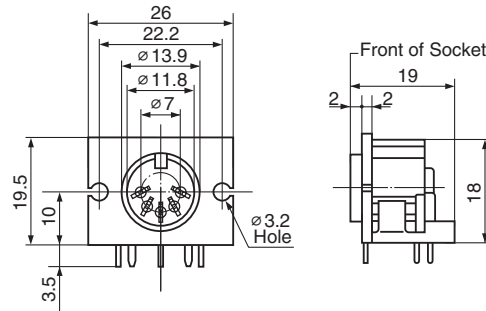
Hole Layout (Bottom View)

DIN Standard No.	45326
Number of Contacts	8a
Arrangement	
Model No.	TCS5089-1841577

TCS4600



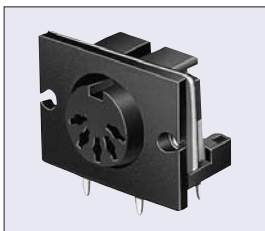
TCS4650-0140577



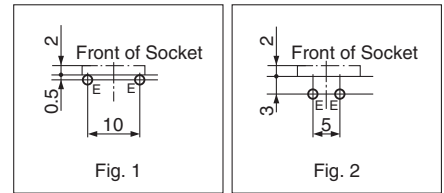
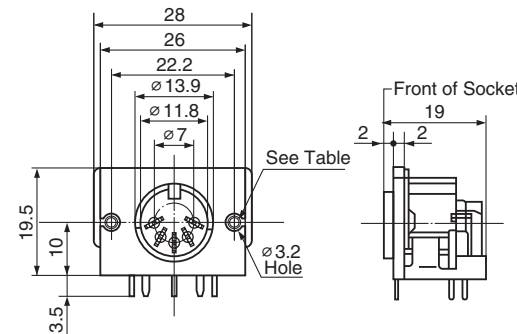
Ground Terminal Position

DIN Standard No.	41524	—	41524	—	45327	45322	45329	45326	—	
Number of Contacts	3	4	5a	5b	5c	6	7	8a	8b	
Arrangement										
Ground Terminal Position	Fig.1	—	TCS4640-0140577	TCS4650-0140577	TCS4620-0140577	TCS4610-0140577	TCS4660-0140577	TCS4670-0140577	TCS4680-0140577	TCS4690-0140577
	Fig.2	—	TCS4640-0141577	TCS4650-0141577	TCS4620-0141577	TCS4610-0141577	TCS4660-0141577	TCS4670-0141577	TCS4680-0141577	TCS4690-0141577

TCS5073



TCS5073-2540577



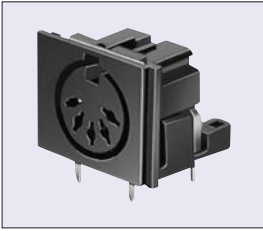
Ground Terminal Position

DIN Standard No.	41524	—	41524	—	45327	45322	45329	45326	—		
Number of Contacts	3	4	5a	5b	5c	6	7	8a	8b		
Arrangement											
Mounting Hole	Ground Terminal Position	Fig.1	—	TCS5073-2440577	TCS5073-2540577	TCS5073-2240577	TCS5073-2140577	TCS5073-2640577	TCS5073-2740577	TCS5073-2840577	TCS5073-2940577
		Fig.2	—	TCS5073-2441577	TCS5073-2541577	TCS5073-2241577	TCS5073-2141577	TCS5073-2641577	TCS5073-2741577	TCS5073-2841577	TCS5073-2941577
M2.6 x 0.45	Ground Terminal Position	Fig.1	—	TCS5073-2440677	TCS5073-2540677	TCS5073-2240677	TCS5073-2140677	TCS5073-2640677	TCS5073-2740677	TCS5073-2840677	TCS5073-2940677
		Fig.2	—	TCS5073-2441677	TCS5073-2541677	TCS5073-2241677	TCS5073-2141677	TCS5073-2641677	TCS5073-2741677	TCS5073-2841677	TCS5073-2941677

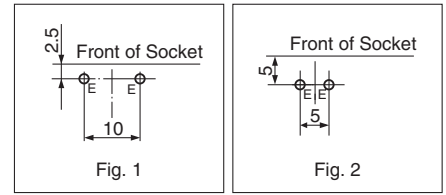
No. of Poles	3	4	5a	5b					
Ground Term. Position Type Fig.1	/								

TCS5031

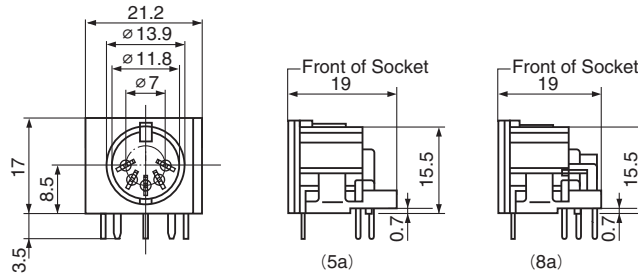
Quick Locking Type

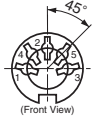
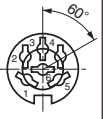
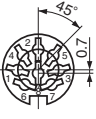


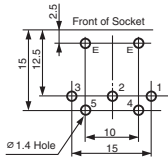
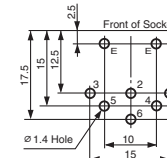
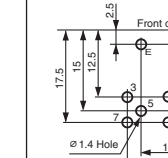
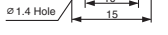
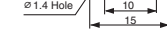
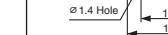
TCS5031-4540577



Ground Terminal Position

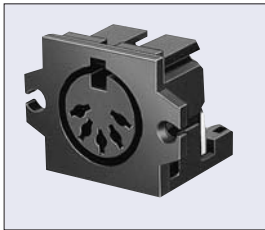


DIN Standard No.	41524	45326	45326
Number of Contacts	5a	6	8a
Arrangement	 (Front View)	 (Front View)	 (Front View)
Ground Terminal Position	Fig.1	TCS5031-4540577	TCS5031-4840577
	Fig.2	TCS5031-4541577	TCS5031-4841577

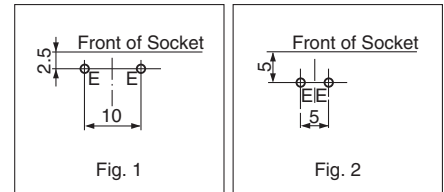
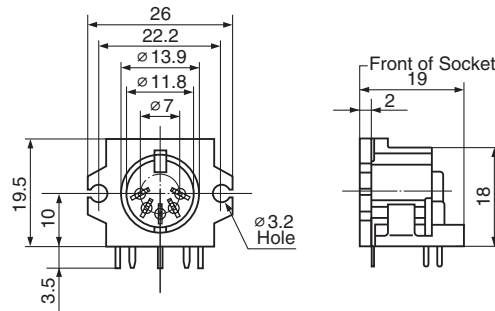
No. of Poles	5a	6	8a
Ground Term. Position Type Fig.1			
Hole Layout (Bottom View)			

TCS5300

Quick Locking Type



TCS5350-0140577

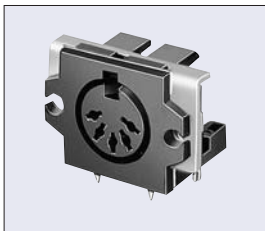


Ground Terminal Position

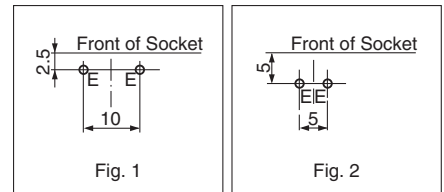
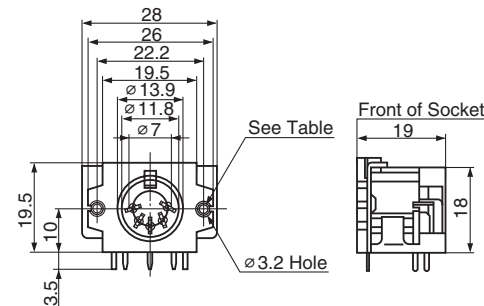
DIN Standard No.	41524	—	41524	—	45327	45322	45329	45326	—
Number of Contacts	3	4	5a	5b	5c	6	7	8a	8b
Arrangement									
Ground Terminal Position	Fig.1	—	TCS5350-0140577	—	—	TCS5360-0140577	TCS5370-0140577	TCS5380-0140577	TCS5390-0140577
	Fig.2	—	TCS5350-0141577	—	—	TCS5360-0141577	TCS5370-0141577	TCS5380-0141577	TCS5390-0141577

TCS5093

Quick Locking Type



TCS5093-1540577



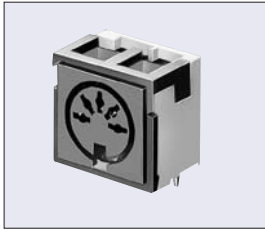
Ground Terminal Position

DIN Standard No.	41524	—	41524	—	45327	45322	45329	45326	—
Number of Contacts	3	4	5a	5b	5c	6	7	8a	8b
Arrangement									
Mounting Hole	Ground Terminal Position								
	Fig.1	—	TCS5093-1540577	—	—	TCS5093-1640577	TCS5093-1740577	TCS5093-1840577	TCS5093-1940577
M3 × 0.5	Fig.2	—	TCS5093-1541577	—	—	TCS5093-1641577	TCS5093-1741577	TCS5093-1841577	TCS5093-1941577
	Fig.1	—	TCS5093-1540677	—	—	TCS5093-1640677	TCS5093-1740677	TCS5093-1840677	TCS5093-1940677
M2.6 × 0.45	Fig.2	—	TCS5093-1541677	—	—	TCS5093-1641677	TCS5093-1741677	TCS5093-1841677	TCS5093-1941677

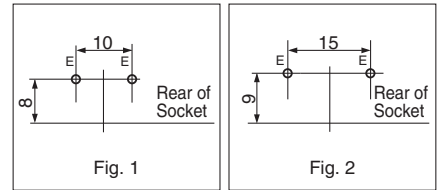
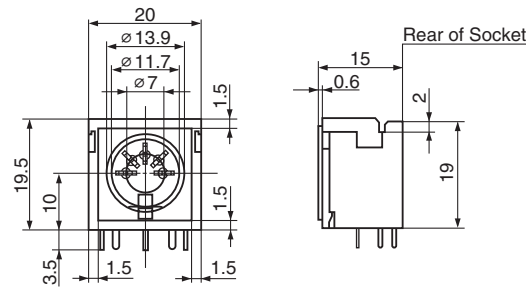
No. of Poles	3	4	5a	5b
Ground Term. Position Type Fig.1 Hole Layout (Bottom View)				
5c			6	

TCS5076

Quick Locking Type



TCS5076-151577



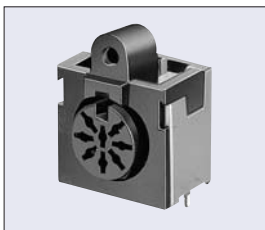
Ground Terminal Position

DIN Standard No.	41524	—	41524	45322	45329	45326	—
Number of Contacts	3	4	5a	6	7	8a	8b
Arrangement							
Ground Terminal Position	Fig.1	—	TCS5076-151577	TCS5076-161577	TCS5076-171577	TCS5076-181577	—
	Fig.2	—	TCS5076-151677	TCS5076-161677	TCS5076-171677	TCS5076-181677	—

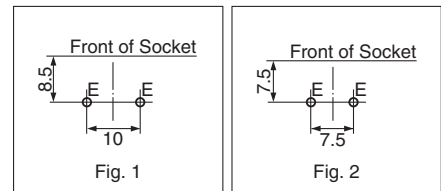
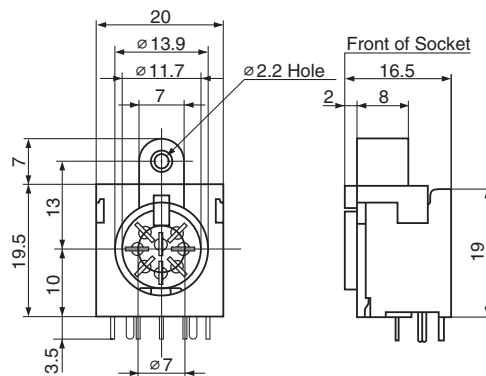
No. of Poles	5a	6	7	8a
Ground Term. Position Type Fig.1				
Hole Layout (Bottom View)				

TCS5107

Quick Locking Type



TCS5107-1820177

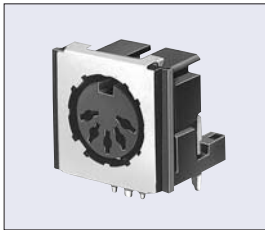


アース接片位置
Ground Terminal Position

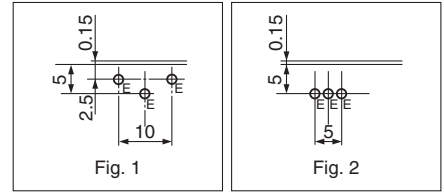
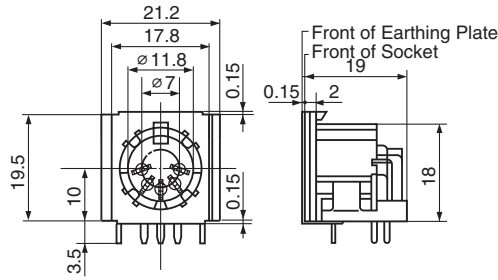
DIN Standard No.	45326	—
Number of Contacts	8a	8b
Arrangement		
Ground Terminal Position	Fig.1	TCS5107-1820177
	Fig.2	TCS5107-1921477

No. of Poles	8a	8b
Ground Term. Position Type Fig.1		
Hole Layout (Bottom View)		

TCS5040



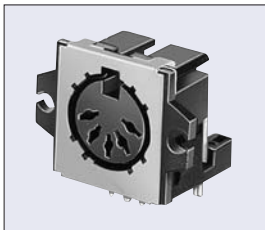
TCS5040-1541577



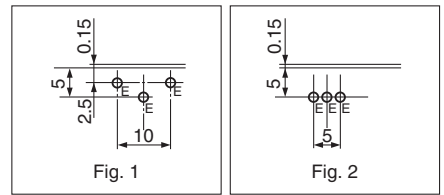
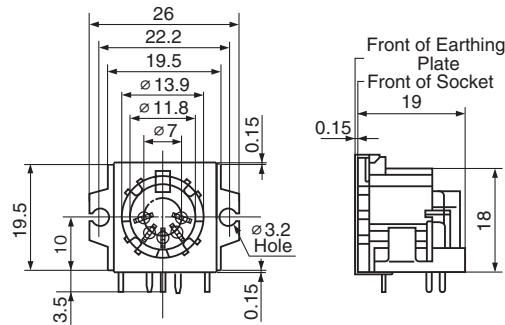
Ground Terminal Position

DIN Standard No.	41524	—	41524	—	45327	45322	45329	45326	—	
Number of Contacts	3	4	5a	5b	5c	6	7	8a	8b	
Arrangement										
Ground Terminal Position	Fig.1	TCS5040-1340577	TCS5040-1440577	TCS5040-1540577	TCS5040-1240577	TCS5040-1140577	TCS5040-1640577	TCS5040-1740577	TCS5040-1840577	TCS5040-1940577
	Fig.2	TCS5040-1341577	TCS5040-1441577	TCS5040-1541577	TCS5040-1241577	TCS5040-1141577	TCS5040-1641577	TCS5040-1741577	TCS5040-1841577	TCS5040-1941577

TCS5090



TCS5090-1541577

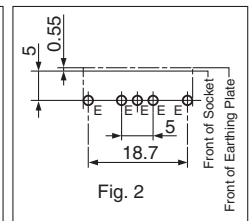
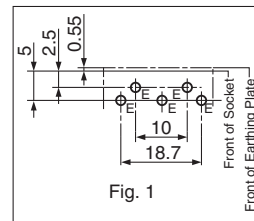
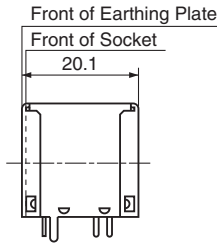
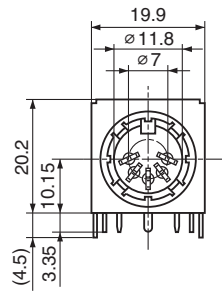
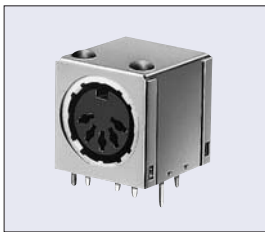


Ground Terminal Position

DIN Standard No.	41524	—	41524	—	45327	45322	45329	45326	—
Number of Contacts	3	4	5a	5b	5c	6	7	8a	8b
Arrangement									
Ground Terminal Position	Fig.1	—	TCS5090-1540577	—	—	TCS5090-1640577	TCS5090-1740577	TCS5090-1840577	TCS5090-1940577
	Fig.2	—	TCS5090-1541577	—	—	TCS5090-1641577	TCS5090-1741577	TCS5090-1841577	TCS5090-1941577

No. of Poles	3	4	5a	5b
Ground Term. Position Type Fig.1 Hole Layout (Bottom View)				
5c	6	7	8a	8b

TCS5074

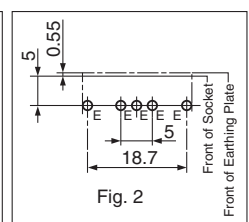
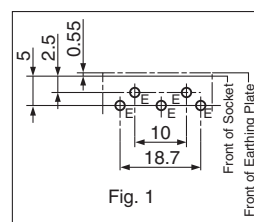
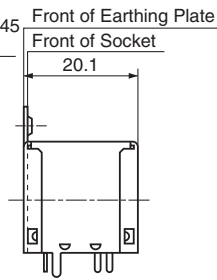
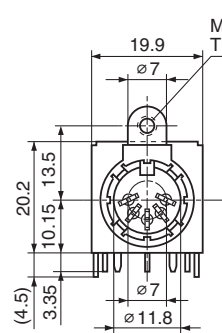
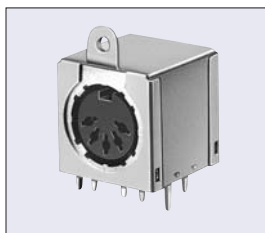


Ground Terminal Position

TCS5074-4540577

DIN Standard No.	41524	—	41524	—	45327	45322	45329	45326	—
Number of Contacts	3	4	5a	5b	5c	6	7	8a	8b
Arrangement									
Ground Terminal Position	Fig.1	TCS5074-4340577	TCS5074-4440577	TCS5074-4540577	TCS5074-4240577	—	TCS5074-4740577	TCS5074-4840577	TCS5074-4940577
	Fig.2	TCS5074-4341577	TCS5074-4441577	TCS5074-4541577	TCS5074-4241577	—	TCS5074-4641577	TCS5074-4741577	TCS5074-4841577

TCS5084



Ground Terminal Position

TCS5084-4540577

DIN Standard No.	41524	—	41524	—	45327	45322	45329	45326	—
Number of Contacts	3	4	5a	5b	5c	6	7	8a	8b
Arrangement									
Ground Terminal Position	Fig.1	TCS5084-4340577	TCS5084-4440577	TCS5084-4540577	TCS5084-4240577	—	TCS5084-4740577	TCS5084-4840577	TCS5084-4940577
	Fig.2	TCS5084-4341577	TCS5084-4441577	TCS5084-4541577	TCS5084-4241577	—	TCS5084-4641577	TCS5084-4741577	TCS5084-4841577

No. of Poles	3	4	5a	5b
Ground Term. Position Type Fig.1 Hole Layout (Bottom View)				
5c	6	7	8a	8b

Model No. Table

Model No.	Page						
TCP0500	4	TCS4440	8	TCS5350	11	TCS8069	5
TCP0600	4	TCS4450	8	TCS5360	11	TCS8074	5
TCP1300	4	TCS4460	8	TCS5370	11	TCS8076	5
TCP4300	4	TCS4470	8	TCS5380	11	TCS8077	5
TCP9426	2	TCS4480	8	TCS5390	11	TCS8079	5
TCS0834	7	TCS4490	8	TCS8024	5	TCS8084	5
TCS0835	7	TCS4610	9	TCS8026	5	TCS8086	5
TCS0836	7	TCS4620	9	TCS8027	5	TCS8087	5
TCS0837	7	TCS4640	9	TCS8029	5	TCS8089	5
TCS0838	7	TCS4650	9	TCS8034	5	TCS8094	5
TCS0839	7	TCS4660	9	TCS8036	5	TCS8096	5
TCS2210	6	TCS4670	9	TCS8037	5	TCS8097	5
TCS2220	6	TCS4680	9	TCS8039	5	TCS8099	5
TCS2230	6	TCS4690	9	TCS8044	5	TCS8554	5
TCS2240	6	TCS5031	10	TCS8046	5	TCS8556	5
TCS2250	6	TCS5040	13	TCS8047	5	TCS8557	5
TCS2260	6	TCS5073	9	TCS8049	5	TCS8559	5
TCS2270	6	TCS5074	14	TCS8054	5	TCS8564	5
TCS2280	6	TCS5076	12	TCS8056	5	TCS8566	5
TCS2290	6	TCS5084	14	TCS8057	5	TCS8567	5
TCS4410	8	TCS5089	8	TCS8059	5	TCS8569	5
TCS4420	8	TCS5090	13	TCS8064	5	TCS8574	5
TCS4430	8	TCS5093	11	TCS8066	5	TCS8576	5
		TCS5107	12	TCS8067	5	TCS8577	5



<http://www.hosiden.com>

Head Office

4-33, Kitakyuhoji 1-chome, Yao-city, Osaka 581-0071, Japan
Phone : +81-72-993-1010 Fax : +81-72-994-5101

Japan Overseas Division :

4-33, Kitakyuhoji 1-chome, Yao-city, Osaka 581-0071, Japan
Phone : +81-72-993-1010 Fax : +81-72-924-8937

China Hosiden Electronics(Shanghai) Co., Ltd.

Room 10-11, 13th Floor, MAXDO Center, Xing-Yi Road, Chang-Ning District, Shanghai China
Phone : +86-21-5208-1488 Fax : +86-21-5208-1480

Hosiden (Shenzhen) Co., Ltd.

Room 3818, Changping Commercial Building, Honghua Road,
Futian Free Trade Zone, Shenzhen, China
Phone : +86-755-8348-0952 Fax : +86-755-8359-7722

Hong Kong Hong Kong Hosiden Ltd.

33, Tseuk Luk Street, 6/F-A San Po Kong, Kowloon, Hong Kong
Phone : +852-23238181 Fax : +852-23520425

Taiwan Taiwan Hosiden Co., Ltd.

10F, No.116, Nanking East Road Sec. 2, Taipei, Taiwan
Phone : +886-2-2571-0017 Fax : +886-2-2561-6413

Singapore Hosiden Singapore Pte. Ltd.

28, Genting, Lane, #04-06/07, Platinum 28, Singapore 349585
Phone : +65-6296-8100 Fax : +65-6296-8300

Malaysia Hosiden Corporation(M)Sdn. Bhd.

Lot1,Jalan P/1A,Bangi,Industrial Estate,43650
Bander Baru Bangi, Selangor Darul Ehsan,Malaysia
Phone : +60-3-8925-8655 Fax : +60-3-8926-6122

Thailand Hosiden (Thailand) Co., Ltd.

889 THAI CC TOWER, 21 Floor, Room 212, South Sathorn Road,
Kwaeng Yannawa, Khet Sathorn, Bangkok 10120, Thailand
Phone : +66-2-673-9760, 9761 Fax : +66-2-673-9762

Germany Hosiden Europe GmbH

Head Office

Graf-Recke-Straße 82, 40239 Düsseldorf, Germany
Phone : +49-211-96493-0 Fax : +49-211-96493-90

France Branch office Paris

45 rue Anatole France, 92300 LEVALLOIS-PERRET, France
Phone : +33-1-4192-9530 Fax : +33-1-4192-9539

U.K. Hosiden Besson Ltd.

11St. Joseph's Trading Estate St. Joseph's Close, Hove, East Sussex,
BN3 7EZ, United Kingdom
Phone : +44-1273-860000 Fax : +44-1273-777501

U.S.A. Hosiden America Corp.

Head Office

120 East State Parkway, Schaumburg, IL, 60173, U.S.A.
Phone : +1-847-885-8870 Fax : +1-847-885-0063

San Jose Sales Office

3031 Tisch Way, Suite, 806 San Jose, CA, 95128, U.S.A.
Phone : +1-408-985-8780 Fax : +1-408-985-8785

Detroit Sales Office

28970 Cabot Drive, Suite 600, Novi, MI 48377
Phone : +1-248-489-0174 Fax : +1-248-489-1154

CAUTION FOR SAFETY

Please use our products properly based on our
Drawing and Specification.